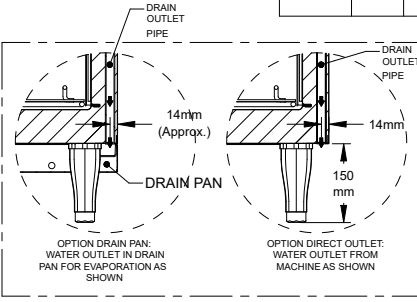
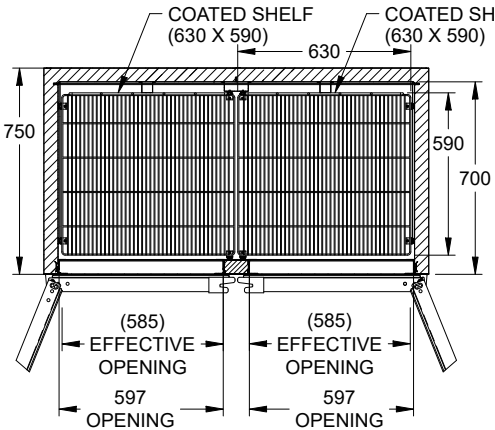
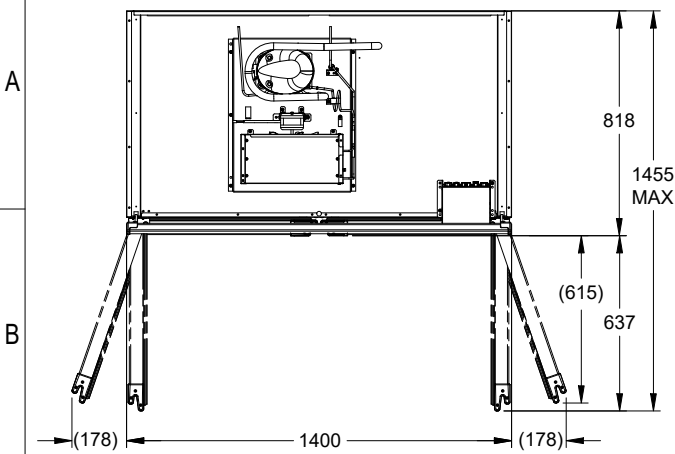


THIS DRAWING AND THE INFORMATION CONTAINED HEREIN IS PROPRIETARY TO M/S WESTERN REFRIGERATION PVT. LTD. IT SHALL NOT BE REPRODUCED, COPIED OR DISCLOSED, IN WHOLE OR IN PART OR USED FOR MANUFACTURE OR FOR OTHER PURPOSE WITHOUT THE WRITTEN PERMISSION OF M/S WESTERN REFRIGERATION PVT. LTD.

WRU/PDC/15,
REV/A
DATE 01.03.2022

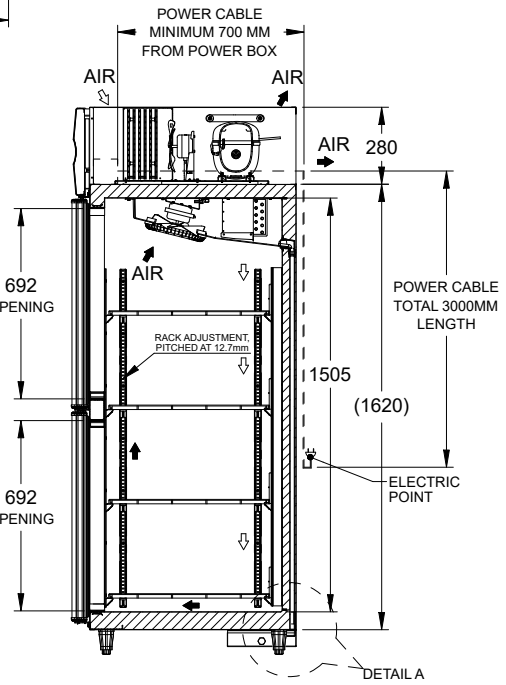
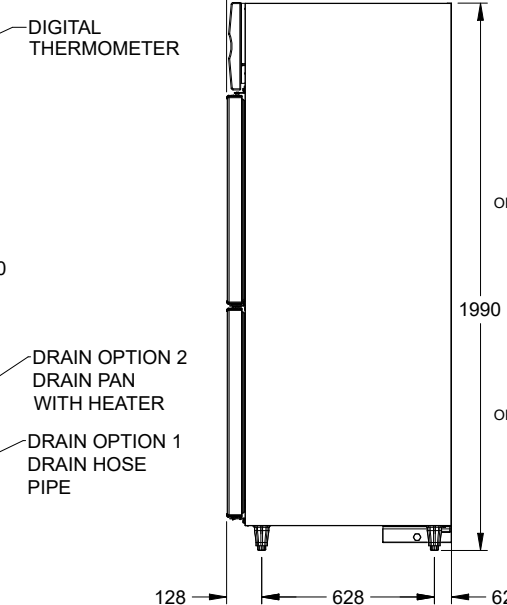
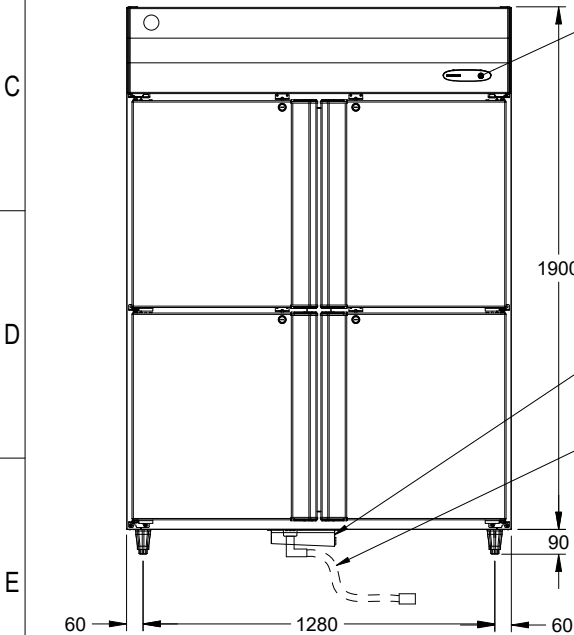
NOTE: COMPONENT AND ASSEMBLY MUST BE COMPLIANT TO APPLICABLE RECENT ROHS DIRECTIVES.

CHANGE NOTE						
REVISION	SHEET NO	ZONE	DETAILS	ECN	DATE	DRAWN



- OPTIONS:
1. PLASTIC 90MM HEIGHT LEG ARE AVAILABLE AS OPTION. (MACHINE OVERALL HEIGHT WILL DECREASE BY 60MM)
 2. CASTOR 124MM HEIGHT ARE AVAILABLE AS OPTION (REFER SHEET 2)
 3. BOTTOM & REAR PANEL CAN BE AVAILABLE IN SUS 430/ SUS304
 4. TOP COVER PANEL IS AVAILABLE AS OPTION, MACHINE OVERALL HEIGHT WILL INCREASE BY 31 MM.

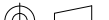
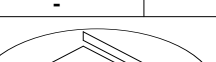

ITEM	HOSHIZAKI REFRIGERATOR
MODEL	HRWH147MS4 / HRWH147LS4
POWER SUPPLY	SINGLE PHASE, 230V AC, 50HZ
AMPERAGE	3.3 AMPS
ELECTRIC CONSUMPTION	650W
HEAT REJECTION	1.697 KW
POWER CORD	16 AMPS / 3 METER
EFFECTIVE CAPACITY	1272L
OUTSIDE DIMENSIONS	1400 (W) X 818 (D) X 1990 (H - WITH 90MM LEG)
INSIDE DIMENSIONS	1296 (W) X 700 (D) X 1505 (H)
EXTERIOR	SS 430 HAIRLINE NO 4 FINISH, GALVANIZED STEEL POWDER COATED (BOTTOM)
INTERIOR	SS 430 HAIRLINE NO 4 FINISH
INSULATION	POLYURETHANE FOAM (CFC FREE)
INSULATION FOAM BLOWING AGENT	CYCLOPENTANE
REFRIGERATION SYSTEM	FORCED AIR CIRCULATION
DEFROST STSTEM	IN COMPRESSOR OFF CYCLE
COMPRESSOR	HERMETIC 1160 W
CONDENSER	FORCED (WIRE ON TUBE)
EVAPORATOR	FORCED (FIN & TUBE)
REFRIGERANT/ CHARGE	R290 / 102 gram
TEMP. CONTROL	ELECTRONIC ADJUSTABLE FROM -2°C TO 12°C
DEFROST CONTROL	BY TEMPERATURE CONTROLLER
ELECTRIC CIRCUIT PROTECTION	NON RESETTABLE FUSE (GLASS FUSE) 10 AMP
COMPRESSOR PROTECTION	MOTOR PROTECTOR
LEG	PLASTIC ADJUSTABLE 90 TO 110MM
SHELF	8 PCS
WEIGHT	NET: 186KG (GROSS: APPROX 221KG)
PACKAGE	CARTON (WOODEN PALLET) 1485MM (W) X 895MM (D) X 2045MM(H)
ASSESSORIES	DRAIN ACCESSORIES AND SHELF CLIPS
OPERATING CONDITIONS	AMBIENT TEMPERATURE : 5 - 43°C VOLTAGE RANGE RATED VOLTAGE ±6%
CABINET LAMP (FOR LS4 VERSION)	LED STRIP TYPE 525MM, 4W, DC24V : 2 NOS.
LAMP DRIVER (FOR LS4 VERSION)	ELECTRONIC DRIVER 12W



*WE RESERVE THE RIGHT TO MAKE CHANGES IN SPECIFICATIONS AND DESIGN WITHOUT PRIOR NOTICE

1. INSTALL THE PRODUCT PROPERLY IN ACCORDANCE WITH THE INSTRUCTIONS ON LOCATION, ELECTRICAL CONNECTIONS STATED IN THE INSTRUCTION MANUAL PROVIDED.
ALLOW 10MM EXTRA SPACE AT THE INSTALLATION SITE TO MEET ANY INSTALLATION REQUIREMENTS (ADDITIONAL SPACING IS ALSO REQUIRED FOR PROPER AIR FLOW AND PIPE CONNECTIONS).
2. THE HEAT REJECTION IS BASED ON THE REACHED PULL DOWN TEMPERATURE AT AMBIENT TEMPERATURE OF 43°C AND POWER SUPPLY OF 230VAC 50HZ.
THE AMPERAGE AND ELECTRIC CONSUMPTION ARE BASED ON MEASUREMENT AT AMBIENT TEMPERATURE OF 43°C AND POWER SUPPLY OF 230VAC 50HZ.

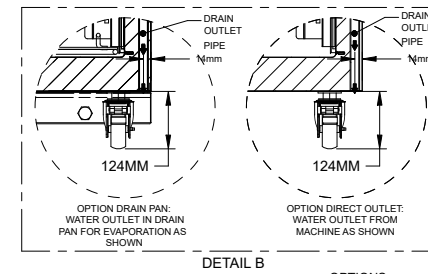
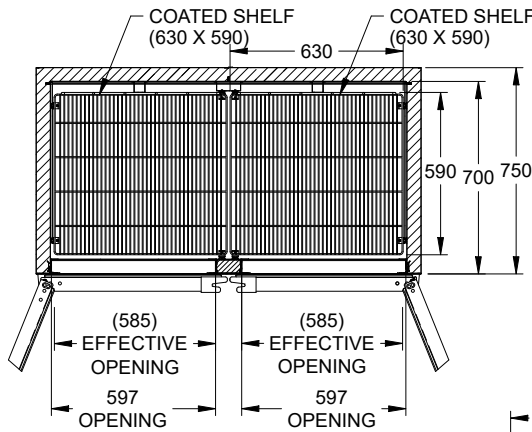
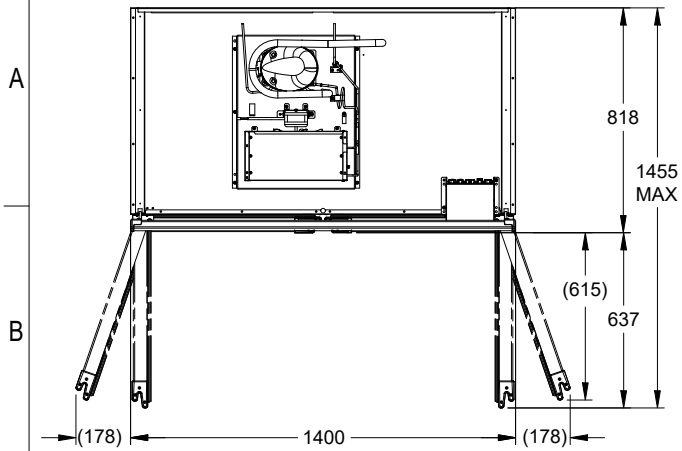
THIS ASSEMBLY DRAWING IS FOR ILLUSTRATION PURPOSE.
COMPONENTS, ASSEMBLY SEQUENCE MAY VARY DEPENDING UPON MANUFACTURING PRACTICES SPECIFIC TO MANUFACTURING LOCATIONS.
REFER PROCESS WORK INSTRUCTIONS FOR MORE DETAILS ON ASSEMBLY.
REFER SAP BOM FOR EXACT MATERIAL CONSUMPTION.

UNSPECIFIED TOLERANCES						<div>SCALE: NTS</div> <div></div> <div>ALL DIMENSIONS ARE IN MM</div>		<div>TITLE</div> <div>REACH-IN REFRIGERATOR</div>		<div>DWG. NO.</div> <div>0711585</div> <div>SAP CODE</div> <div>-</div>		<div>REVISION</div> <div>A</div>			
DIM	<6	6-30	30-120	120-400	400-1000	>1000									
TOL	N/A	±1.0	±1.5	±2.0	±2.5	±3.0									
UNSPECIFIED TOL. ON ANGLE ±0.5							DRAWN BY		MODEL		<div></div>				
							ROSHAN		HRWH147MS4 / HRWH147LS4						
<div>1 *  DIMENSIONS ARE IMPORTANT.</div> <div>2 REFERENCE DIMENSIONS ARE MARKED WITH "R"</div> <div>3 PART SHOULD BE FREE FROM SHARP EDGES & BURRS</div>							CHECKED BY		RELEASE DATE					SHEET	
							ANAND		23.08.2023					1 OF 2	
							APPROVED BY		RELEASE STAGE:						
REFERENCE STANDARD							PRATAP		RELEASED						

THIS DRAWING AND THE INFORMATION CONTAINED HEREIN IS PROPRIETARY TO M/S WESTERN REFRIGERATION PVT. LTD. IT SHALL NOT BE REPRODUCED, COPIED OR DISCLOSED, IN WHOLE OR IN PART OR USED FOR MANUFACTURE OR FOR OTHER PURPOSE WITHOUT THE WRITTEN PERMISSION OF M/S WESTERN REFRIGERATION PVT. LTD.

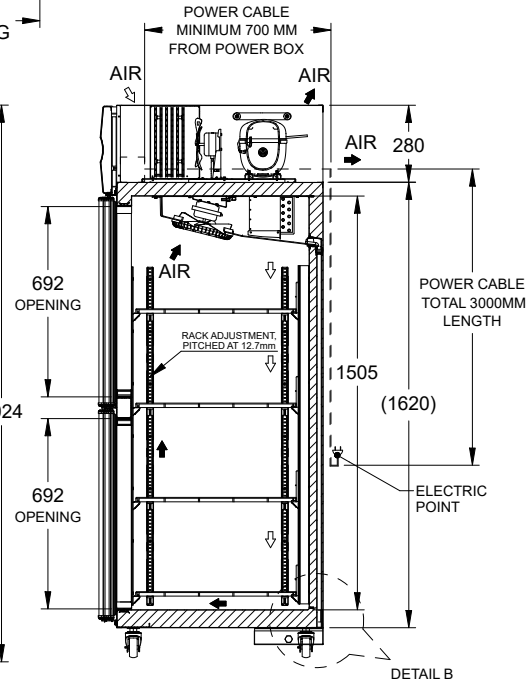
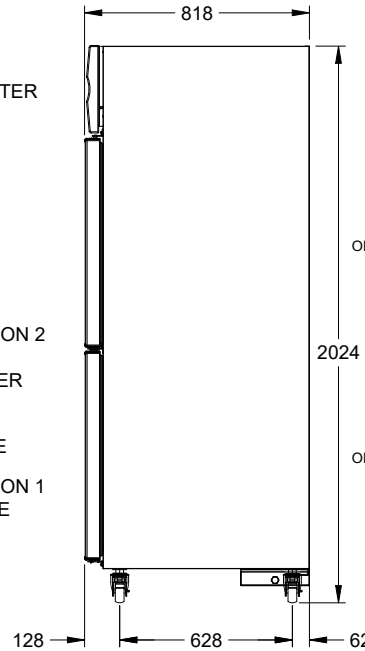
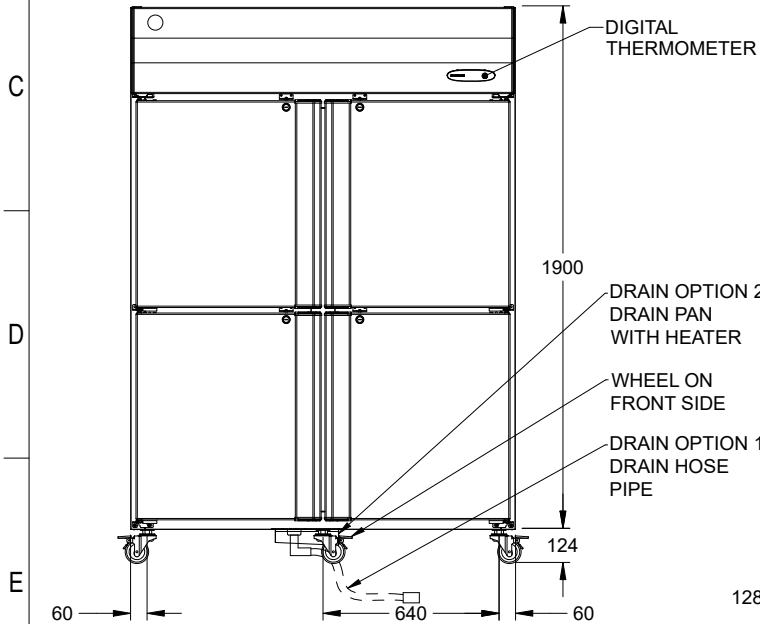
WRU/PC/15,
REV/A
DATE 01.03.2022

NOTE: COMPONENT AND ASSEMBLY MUST BE COMPLIANT TO APPLICABLE RECENT ROHS DIRECTIVES.



- OPTIONS:
3. BOTTOM & REAR PANEL CAN BE AVAILABLE IN SUS 430/ SUS304
4. TOP COVER PANEL IS AVAILABLE AS OPTION, MACHINE OVERALL HEIGHT WILL INCREASE BY 31 MM.

ITEM	HOSHIZAKI REFRIGERATOR
MODEL	HRWH147MS4 / HRWH147LS4
POWER SUPPLY	SINGLE PHASE, 230V AC, 50HZ
AMPERAGE	3.30 AMPS
ELECTRIC CONSUMPTION	650W
HEAT REJECTION	1.697 KW
POWER CORD	16 AMPS / 3 METER
EFFECTIVE CAPACITY	1272L
OUTSIDE DIMENSIONS	1400 (W) X 818 (D) X 2024 (H - WITH CASTOR)
INSIDE DIMENSIONS	1296 (W) X 700 (D) X 1505 (H)
EXTERIOR	SS 430 HAIRLINE NO 4 FINISH, GALVANIZED STEEL POWDER COATED (BOTTOM)
INTERIOR	SS 430 HAIRLINE NO 4 FINISH
INSULATION	POLYURETHANE FOAM (CFC FREE)
INSULATION FOAM BLOWING AGENT	CYCLOPENTANE
REFRIGERATION SYSTEM	FORCED AIR CIRCULATION
DEFROST STSTEM	IN COMPRESSOR OFF CYCLE
COMPRESSOR	HERMETIC 1160 W
CONDENSER	FORCED (WIRE ON TUBE)
EVAPORATOR	FORCED (FIN & TUBE)
REFRIGERANT/ CHARGE	R290 / 102 gram
TEMP. CONTROL	ELECTRONIC ADJUSTABLE FROM -2°C TO 12°C
DEFROST CONTROL	BY TEMPERATURE CONTROLLER
ELECTRIC CIRCUIT PROTECTION	NON RESETTABLE FUSE (GLASS FUSE) 10 AMP
COMPRESSOR PROTECTION	MOTOR PROTECTOR
CASTOR	NON ADJUSTABLE 5 NOS
SHELF	8 PCS
WEIGHT	NET: 188KG (GROSS: APPROX 223KG)
PACKAGE	CARTON (WOODEN PALLET) 1485MM (W) X 895MM (D) X 2045MM(H)
ASSESSORIES	DRAIN ACCESSORIES AND SHELF CLIPS
OPERATING CONDITIONS	AMBIENT TEMPERATURE : 5 - 43°C VOLTAGE RANGE RATED VOLTAGE ±6%
CABINET LAMP (FOR LS4 VERSION)	LED STRIP TYPE 525MM, 4W, DC24V : 2 NOS.
LAMP DRIVER (FOR LS4 VERSION)	ELECTRONIC DRIVER 12W



*WE RESERVE THE RIGHT TO MAKE CHANGES IN SPECIFICATIONS AND DESIGN WITHOUT PRIOR NOTICE

1. INSTALL THE PRODUCT PROPERLY IN ACCORDANCE WITH THE INSTRUCTIONS ON LOCATION, ELECTRICAL CONNECTIONS STATED IN THE INSTRUCTION MANUAL PROVIDED.
ALLOW 10MM EXTRA SPACE AT THE INSTALLATION SITE TO MEET ANY INSTALLATION REQUIREMENTS (ADDITIONAL SPACING IS ALSO REQUIRED FOR PROPER AIR FLOW AND PIPE CONNECTIONS).
2. THE HEAT REJECTION IS BASED ON THE REACHED PULL DOWN TEMPERATURE AT AMBIENT TEMPERATURE OF 43°C AND POWER SUPPLY OF 230VAC 50HZ.
THE AMPERAGE AND ELECTRIC CONSUMPTION ARE BASED ON MEASUREMENT AT AMBIENT TEMPERATURE OF 43°C AND POWER SUPPLY OF 230VAC 50HZ.

STANDARD	ALL SUS 430	TITLE	DWG. NO.	REVISION
LED VERSION	HRWH147MS4 HRWH147LS4	REACH-IN REFRIGERATOR	0711585	A
SCALE: NTS	ALL DIMENSIONS ARE IN MM	DRAWN BY ROSHAN	SAP CODE	
CHECKED BY ANAND	RELEASE DATE 23.08.2023	MODEL HRWH147MS4 / HRWH147LS4		
APPROVED BY PRATAP	RELEASE STAGE: RELEASED	SHEET 2 OF 2		

